

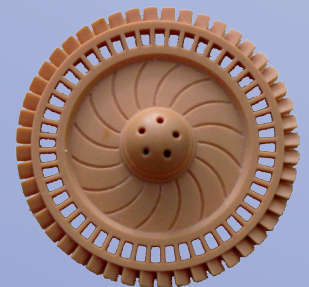
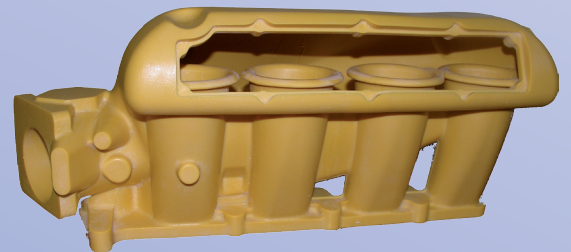
The Benchmark in 3Dimensional Desktop Printing



Patents pending

- **Building Envelope: 10.4" x 6.5" x 8"**
(264 x 165 x 203 mm)
- **Voxel resolution in X and Y: 69 microns (0.0028")** with ERM Software (Native 138 microns, 0.0055")
- **Voxel resolution in Z : Adjustable from 20 microns (0.0007") to 100 microns (0.004")**
- **Build Speed: 0.5" (12.7 mm) per hour at 100 microns voxel depth for full build envelope**
- **Small foot print W 29" x D 30" x H 46"**
(73.66x76.2x116.84 cm)
- **Weight: 90 Kg (200 lbs)**
- **Electrical: 100-127 VAC, 50/60 Hz, Single phase, 10A; 200-240 VAC, 50Hz, Single phase, 6A**

- **Extremely smooth surfaces with built in "pixel shift" and "pixel tuning" patented technology**
- **Multiple choice of resins, from ABS to Polypropylene like materials and wax based for investment casting.**
- **Office friendly plug and play operation with a built-in Touch Screen**
- **Single material for build and support with easily removable perforated support.**
- **Extremely reliable system with a well proven DLP technology**



All specifications are subject to change without notice.